



WELCOME

TO ST. THOMAS EPISCOPAL CHURCH

At St. Thomas Church, we strive to be a community where the dignity of every human being is seen and honored. As Christians, we seek to welcome all of God's people, celebrating the fullness of their being that is inclusive of race, ethnicity, sexual orientation, education, faith history, age, economic status, sex, gender identity and expression, language, physical and cognitive ability. We seek to be the Body of Christ where all members feel safe, loved and that they belong. Whoever you are, and wherever you are on your spiritual journey, there is a place for you at St. Thomas!

February 1, 2026

Fourth Sunday after the Epiphany

WORSHIP

9am | Holy Eucharist,
followed by the
Annual Meeting

FORMATION

8:45am | Building Blocks of
Faith and Godly Play

There will be childcare in the children room all morning for younger children and activities for older children in Godly Play & Building Blocks rooms during the Annual Meeting.



New to St. Thomas?

New to St. Thomas? Your presence and prayers are a gift to our community. You are fully welcome in this place! If you would like to learn more about St. Thomas, or for us to be in touch with you, please fill out a welcome card in the pew in front of you, and place it in the offering plate before Communion. A member of the clergy will reach out to you.



Hearing assistive devices are available. Please ask an usher.



Childcare is available from 9am-1pm in the Childcare Room, located on the first floor of the Ebsworth Life Center.

SUPPORT ST. THOMAS TODAY!

Scan the QR code or go to stthomasmedina.org/giving.



UPCOMING AT ST. THOMAS

TODAY | 4th Sunday after the Epiphany

Holy Eucharist at 9am, followed by the

St. Thomas Annual Meeting

February 7 | Men's Breakfast at 9am

Chorister Concert & Fundraiser at 6pm

February 8 | Valentine's Day Coffee Hour

Pick up your Lent-in-a-Bag

February 14 | St. Thomas Music Guild presents *Love*

Songs from the Broadway Stage at 7:30pm

February 15 | Last Sunday after the Epiphany

February 17 | Shrove Tuesday Pancake Supper at 5:30pm



FORWARD IN FAITH

If you need help
with your pledge,
please contact Jean
at (425) 454-9541.

*Join us on February 8th
for our annual
Valentine Coffee Hour
after the 10am service*



WE ARE GRATEFUL FOR THE MANY
HANDS THAT MAKE ST. THOMAS
A FLOURISHING COMMUNITY

ST. THOMAS MUSIC GUILD PRESENTS

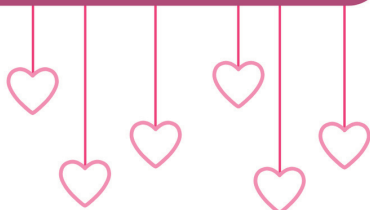


Love Songs from the Broadway Stage

Feb. 14 / 7:30pm

followed by a reception

Donations received
at this free concert
will support future St.
Thomas Music Guild
concerts and events.



LENTEN SERIES: PRAYING WITH THE POETRY OF ANN WEEMS

Sundays at 9am in the library

Join us for a four-
week Lenten series
centered on the
poetry of Ann Weems,
drawn from her
collection *Kneeling in
Jerusalem*. Each
week we will read
one poem together
and reflect on it as a
form of prayer.

February 22

March 1

March 8

March 15



ST. THOMAS MEN'S RETREAT FEBRUARY, 20-22 HUSTON CAMP & CONFERENCE CENTER



Register
now!

This year's retreat
invites the men of
our parish to
explore the spiritual
practice of *being
with* — with God,
with ourselves, with
one another, and
with the world. We
will be discussing
David Brooks book,
*How to Know a
Person*, which
explores how deep
attention, empathy,
and curiosity can
transform our
relationships and
our communities.



We will start at 3pm
on Friday, the 20th
and end at 12pm on
Sunday, the 22nd at
Huston Camp &
Conference Center
in Gold Bar.

We hope you can
join us!

If you have questions,
contact Gregg Soelter
at (425) 894-9384 or
Claude Rogers at
(425) 681-3501.



HELP US RESTOCK OUR WINE CELLAR!

We try to maintain a supply
of wine for parish events,
but our "cellar" is getting
depleted (especially white
wine). If you were gifted
bottles you won't use or
have leftover party wine,
please consider donating
them to our reserves. Wine
can be brought to the
Great Hall wine table.



AN EVENING
FOR THE
CHORISTERS

February 7 | 6pm

SHROVE TUESDAY
PANCAKE SUPPER

February 17
5:30-7:30pm



ASH
WEDNESDAY IS
FEBRUARY 18



12-1pm



Drive-Thru Ashes
For those on the go,
under the church porch

5:30pm

**Online Children's
Service**

A brief online service designed
for families with children. Pick
up ashes you can impose
at-home in the two weeks
leading up to Ash Wednesday.

7pm

Holy Eucharist
with Imposition of Ashes and
the Choir of St. Thomas
Church



RECEPTION DESK
VOLUNTEERS
NEEDED!



Our church reception desk is staffed by
volunteers & we need your help! Shifts
are 9:00-noon & noon-3:00 Monday thru
Thursday. It's very easy work & much
appreciated by staff. If you can volunteer
for a shift now and then, please call Mary
Waldmann at (425) 217-9393 or email
rwaldmann1@mac.com. Thanks!

A SERIES ON CHRISTIANITY
WITH DR. PHIL BALLINGER

after the 10am service in the library

February 22 The Rise of Christianity

March 22 The Spoken Word, the Written Word,
and the Rise of the New Testament

April 19 A User's Guide to the 'bible' within the
Bible — the Psalms

May 31 Is Poetic Language the Best God Language?'

*Philip Ballinger, Ph.D., S.T.D., is an
Emeritus Associate Vice Provost at the
University of Washington.*



Got an announcement? Submit it at least one week in advance to
communications@StThomasMedina.org.
Be sure to include key details like date, time, and location.

 **ST. THOMAS**
EPISCOPAL CHURCH

8398 NE 12th St. Medina, WA 98039
(425) 454-9541
stthomasmedina.org

Office Hours
Monday-Thursday
9AM-3PM

*Call the office to visit
with a specific staff
member, as individual
hours may vary.*

A NOTE ABOUT WORSHIP

This worship service takes place in an area
where photography, audio, and video
recording will occur. Attending and
participating in the service confirms consent
to such recording and to the release,
publication, exhibition, or reproduction of all
related forms of media.